

PK 165.002 TEC 7

PALFINGER

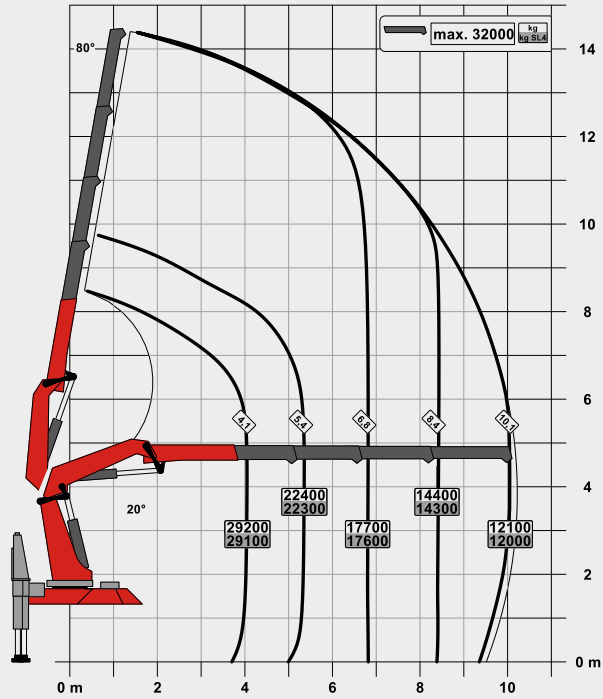
LIFETIME EXCELLENCE

LIGHTWEIGHT DESIGN MEETS HIGH-TECH CONTROL SYSTEMS

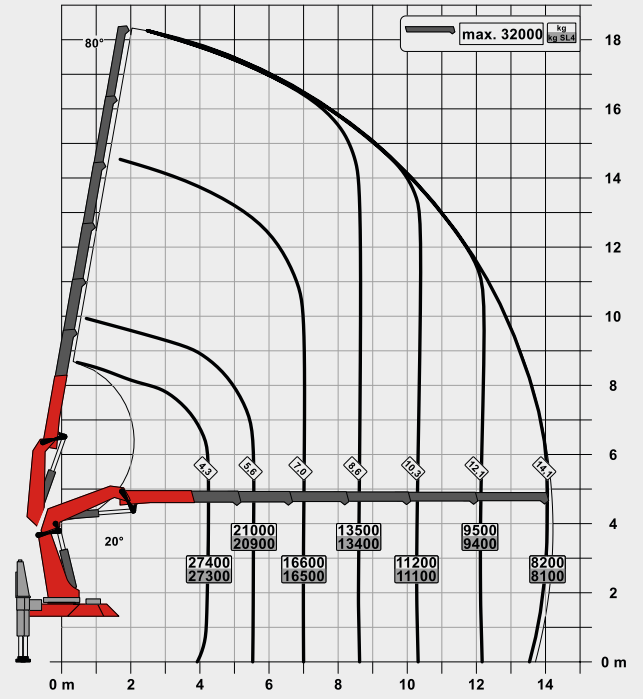


PK 165.002 TEC 7

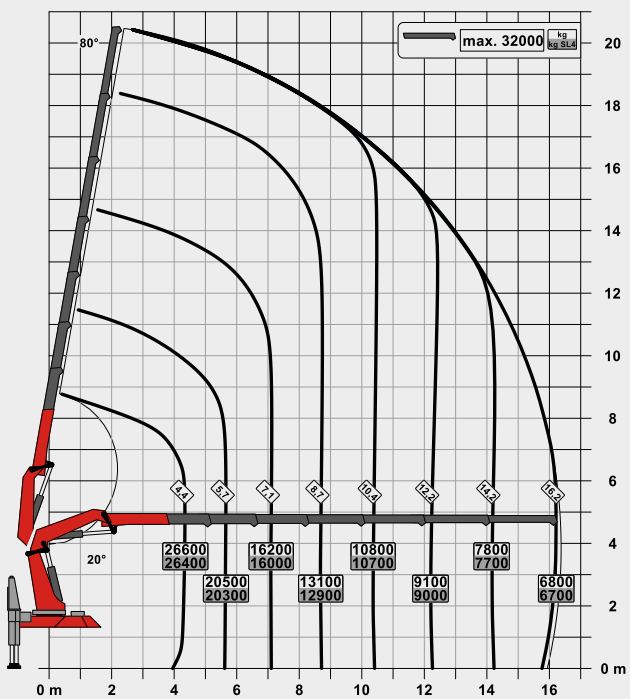
C



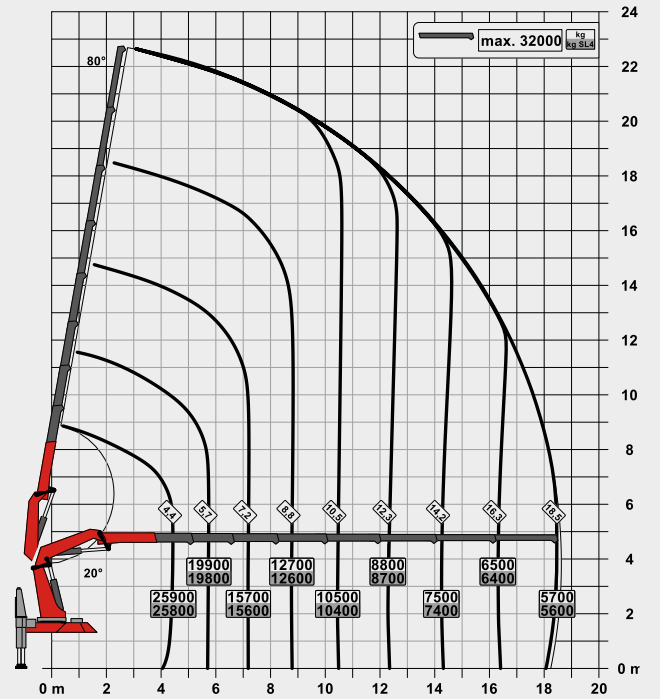
E



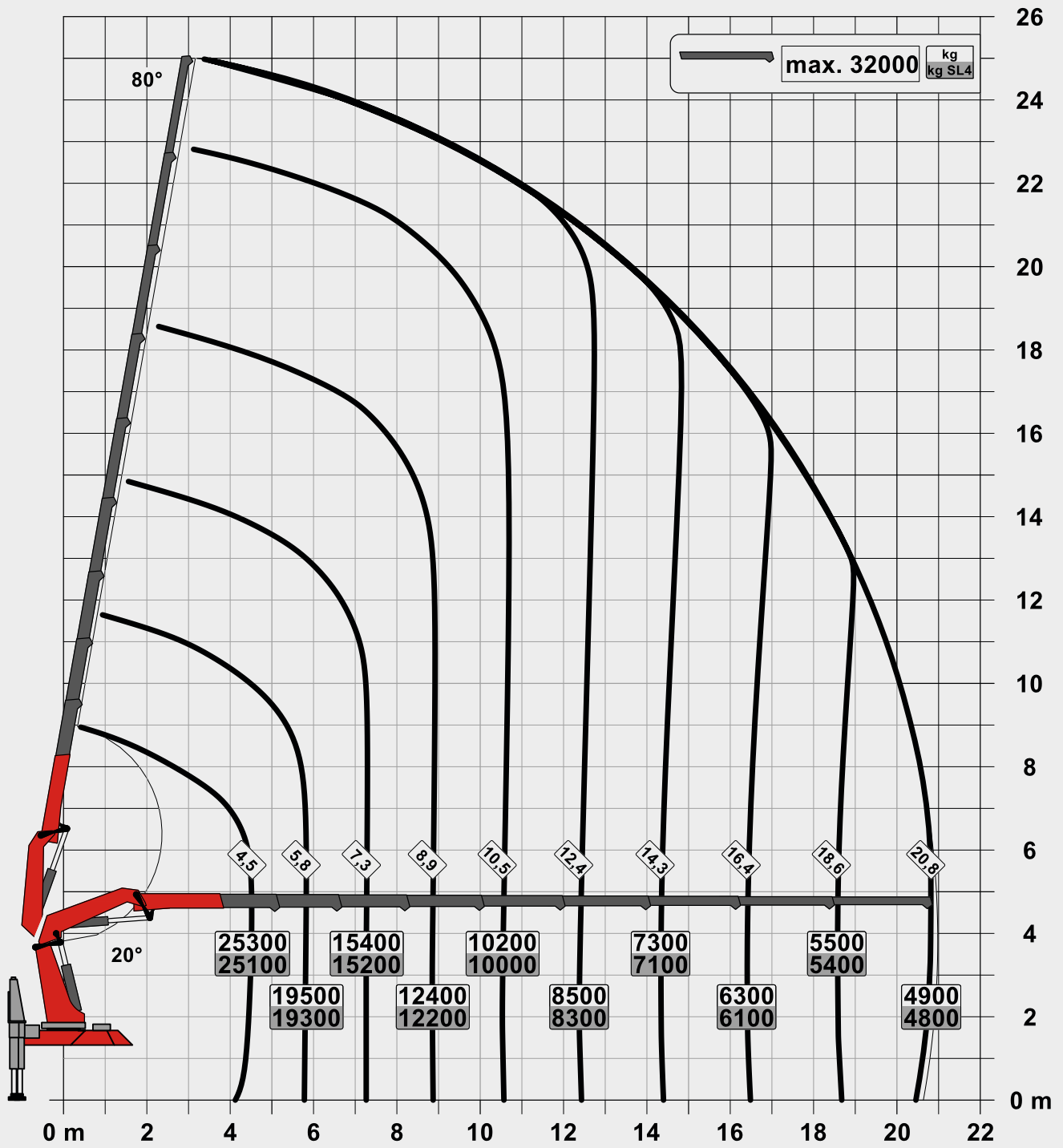
F



G



H



PK 165.002 TEC 7

TECHNICAL DATA (EN 13001 HC1 HD5/S1)

| | | |
|------------------------------|---------------------|--------------|
| Max. lifting moment | 124.8 mt/1224.3 kNm | 903020 ft.lb |
| Max. lifting capacity | 32000 kg/313.9 kN | 70600 lb |
| Max. hydraulic outreach | 21.0 m | 68' 10" |
| Max. outreach (with fly-jib) | 36.1 m | 118' 4" |
| Slewing angle | continuous | |
| Slewing torque | 12.0 mt/117.8 kNm | 86880 ft.lb |
| Stabiliser spread | 10.0 m | 32' 10" |
| Width folded | 2.55 m | 8' 4" |
| Max. operating pressure | 385 bar | 5584 psi |
| Recommended pump capacity | 2 x 120 l/min | 31.7 US gpm |
| Dead weight: (HYA C R4X) | 11510 kg | 25370 lb |

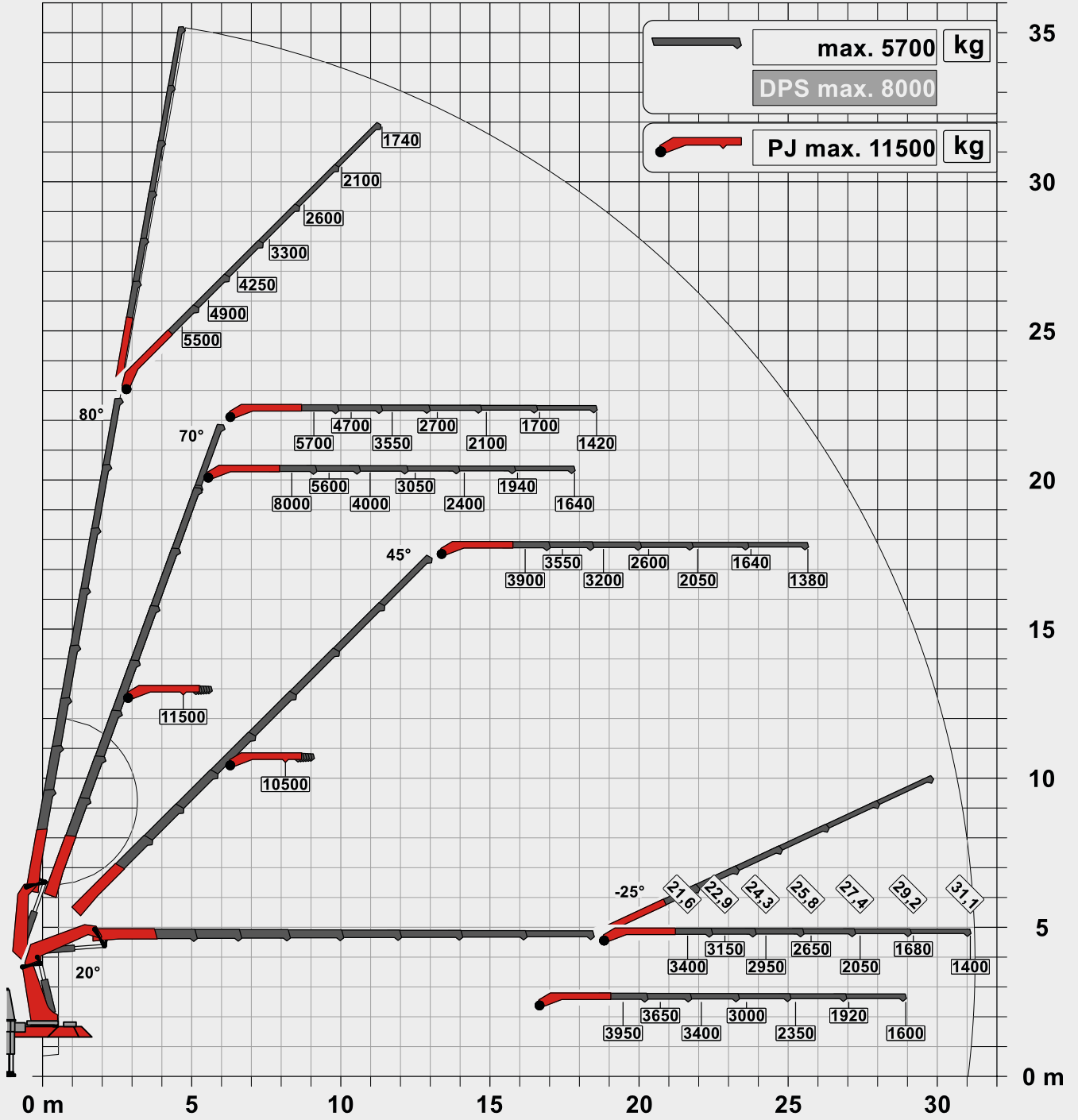
TEC 7

- Power Link Plus
- Paltronic 150
- S-HPLS
- PALcom P7
- Soft Stop
- Optional:
 - DPS-C
 - HPSC Plus
 - P-Fold
 - PJ 240 or PJ 300
 - Rope winch 3.5t / 4.5t

GROSS VEHICLE WEIGHT of less than 32ton - fully equipped

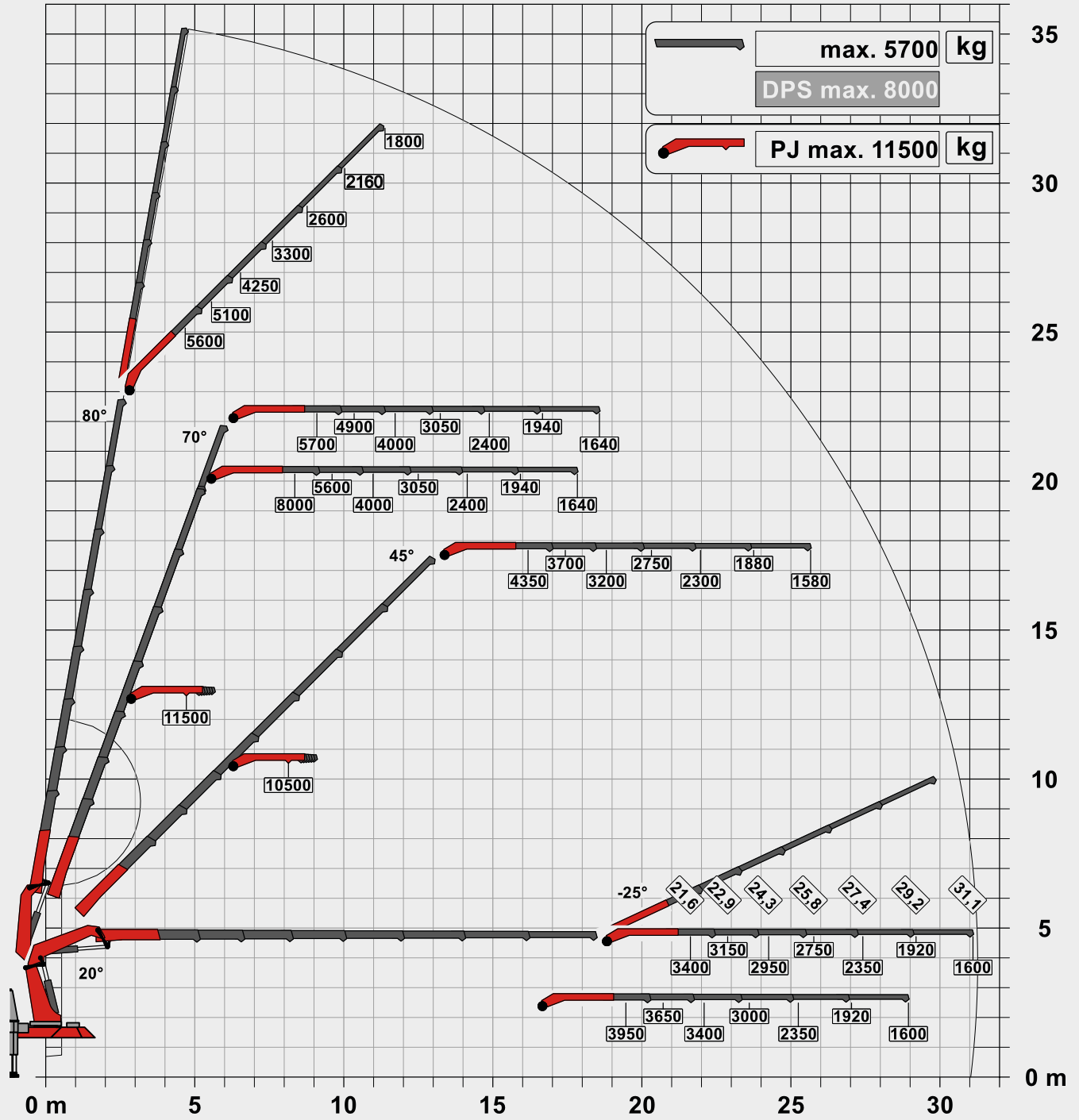


G PJ 240 E DPS Plus

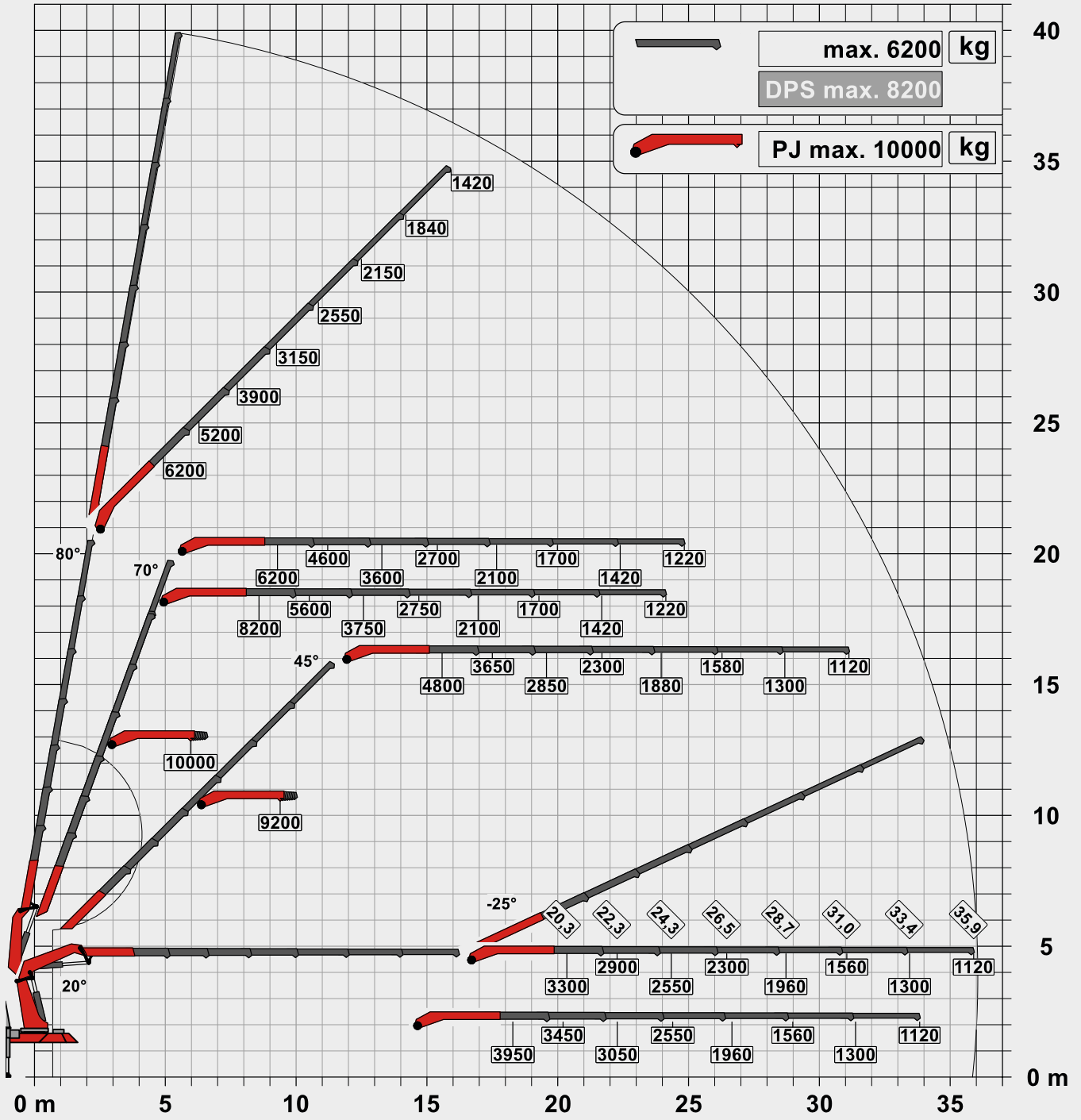


PK 165.002 TEC 7

G PJ 240 E DPS-C



F PJ 300L F DPS-C





Cranes shown in the leaflet are partially optional equipped and do not always correspond to the standard version.
Country-specific regulations must be observed. Dimensions may vary. Subject to technical changes, errors and translation mistakes.